

ALLEGATO DATI PERSONALI

NOME
Martina

.....

COGNOME
Buttafoco

.....

CLASSE
III C Grafico Pubblicitario

.....

SCUOLA
I.S.I.S. per la Grafica Pubblicitaria "Federigo Enriques"

.....

INDIRIZZO
Via Duca d'Aosta, 65 . 50051 Castelfiorentino (FI)

.....

DOCENTE DI RIFERIMENTO
Prof.ssa Luisella Giacomini

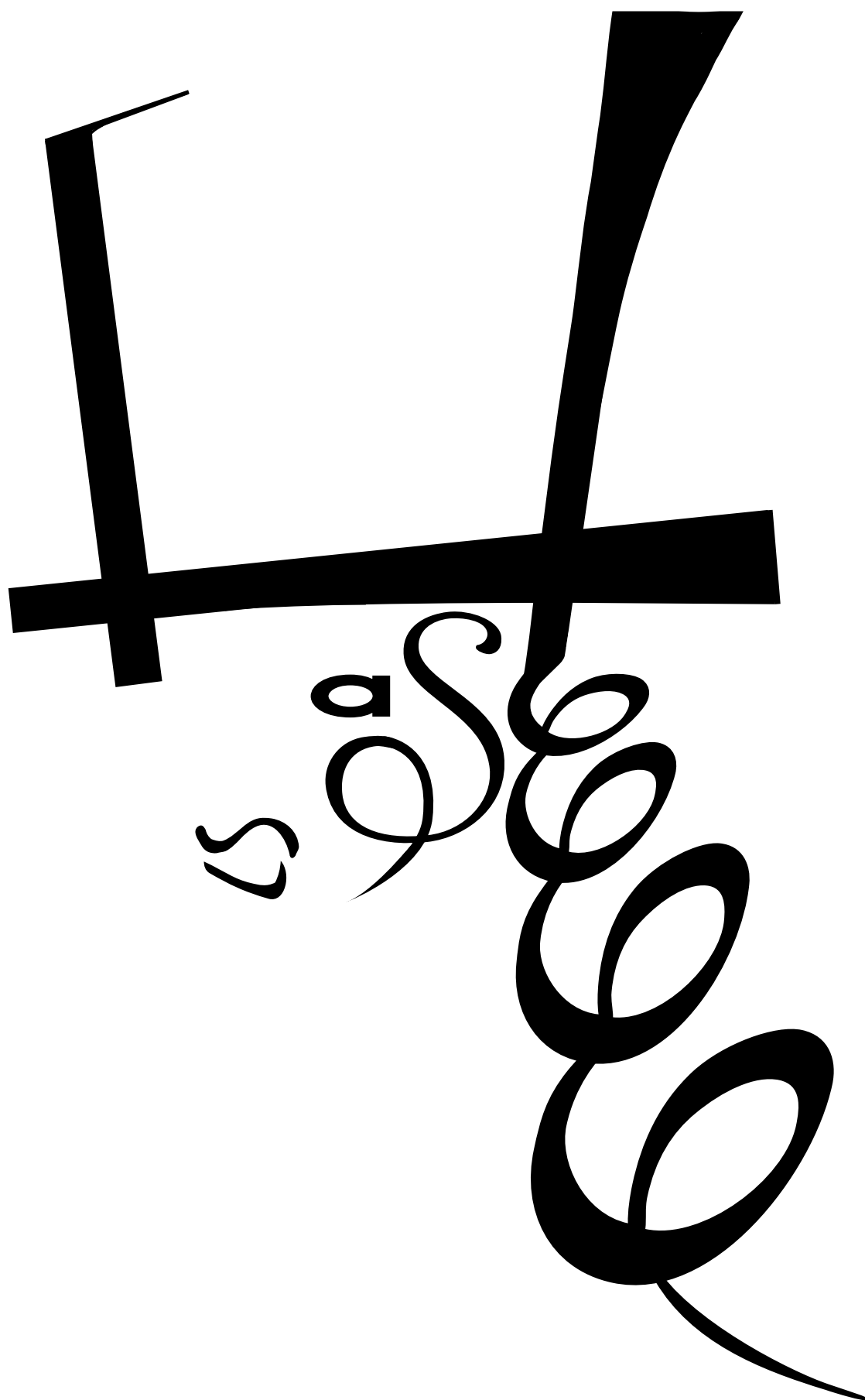
.....

CELLULARE
338.8211574

.....

TELEFONO SCUOLA
0571. 633083/4

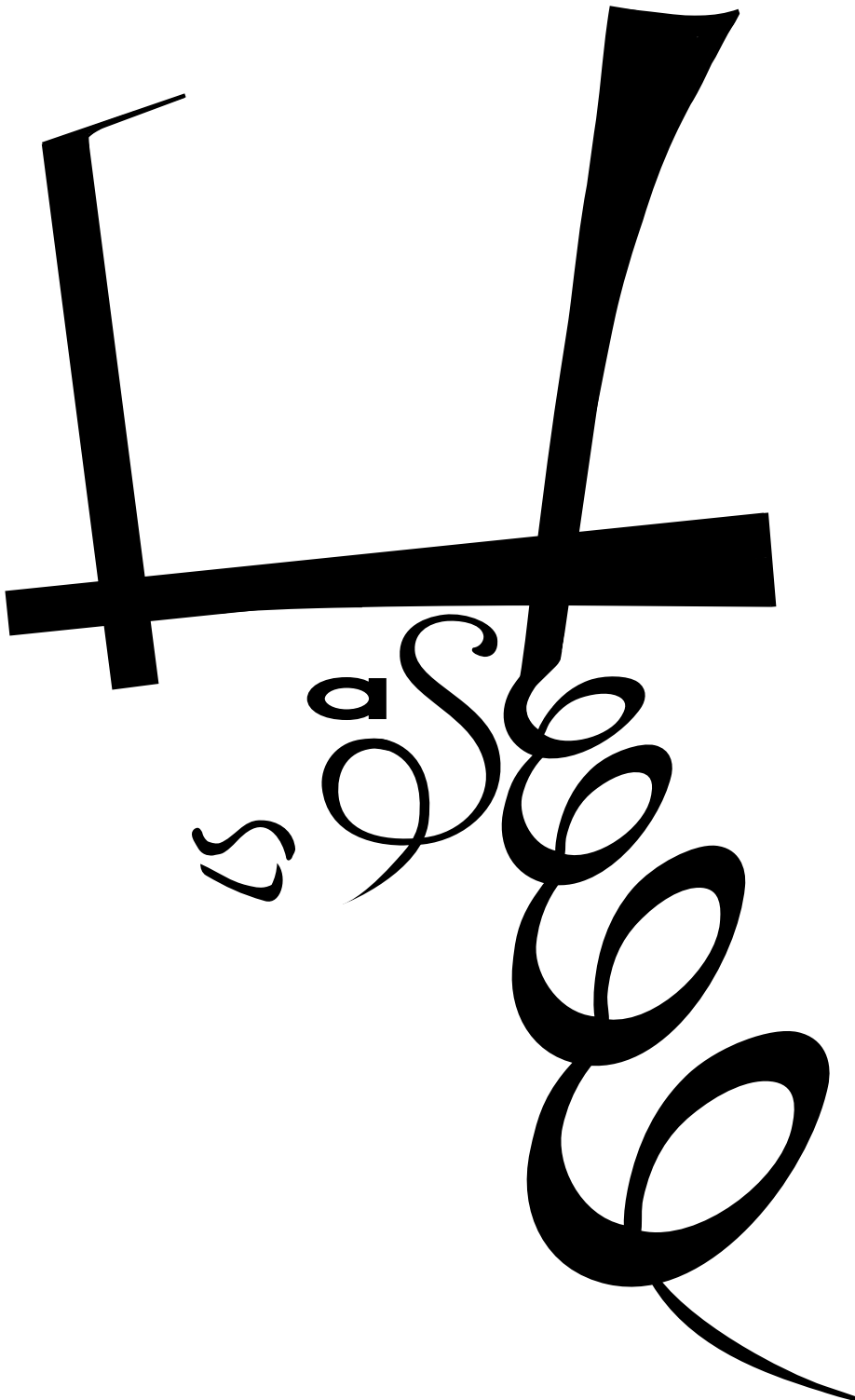
.....



Concorso Calligrafico 2010 / 2011



Slash



S = ricciolo

L = labbro inferiore

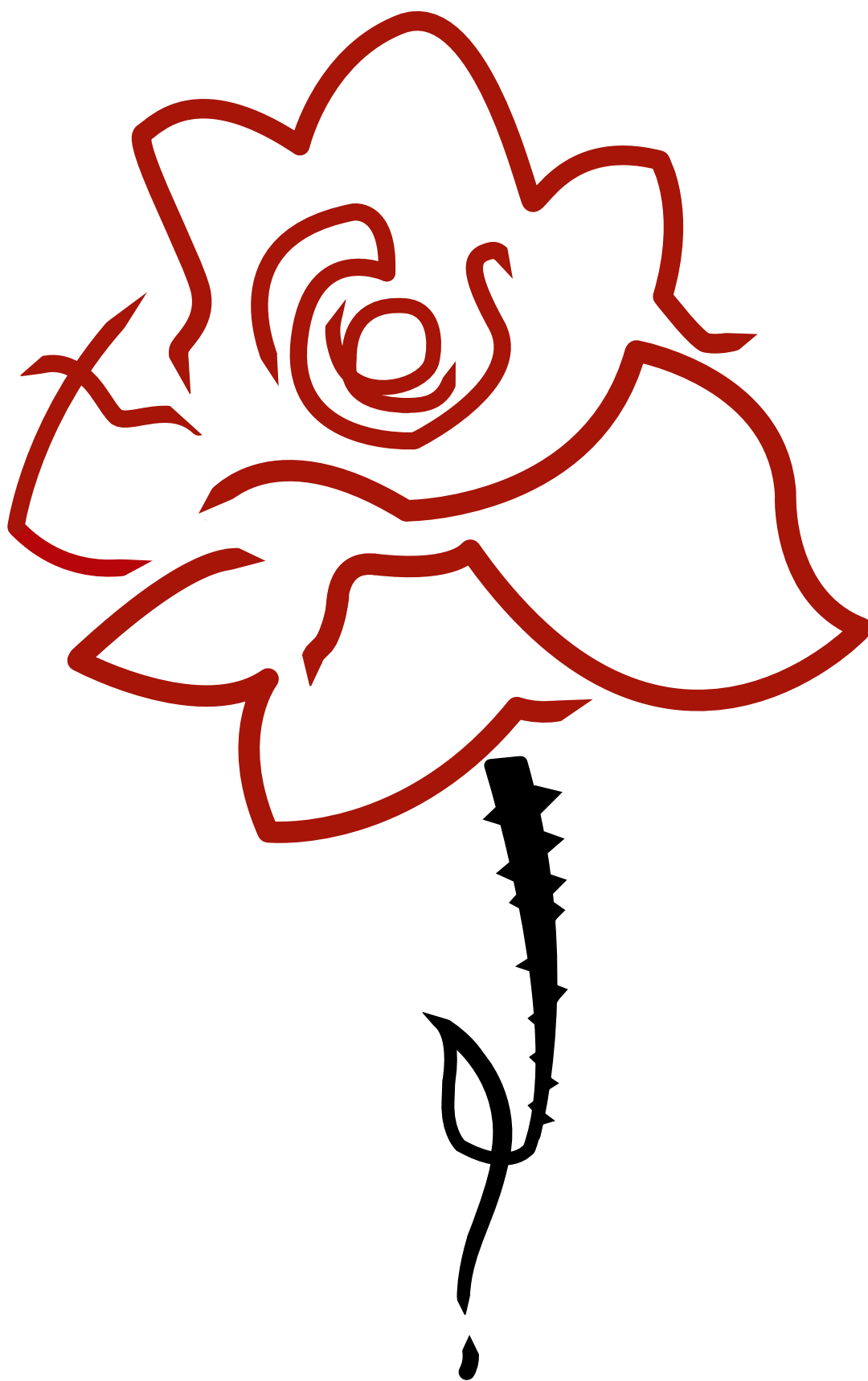
a = occhio

S = labbro superiore

H = cilindro, capelli

Concorso Calligrafico 2010 / 2011

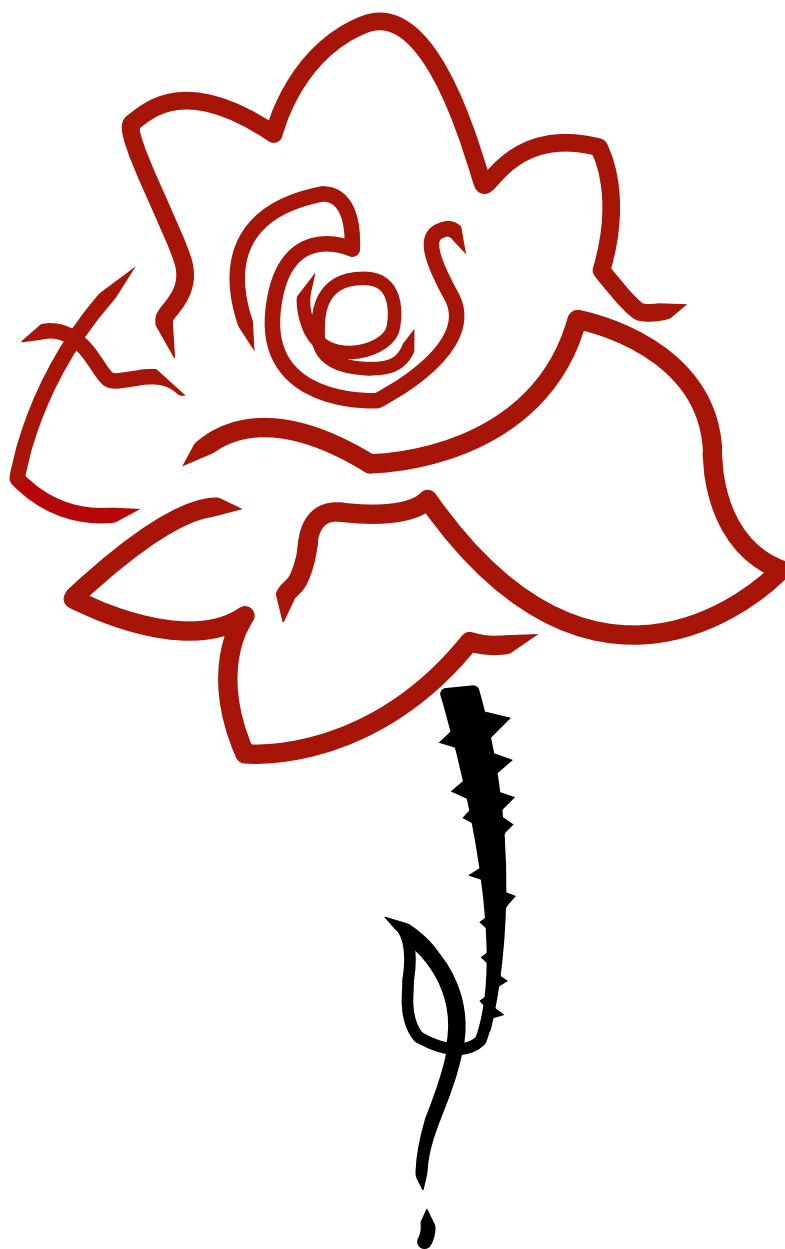
Martina



Concorso Calligrafico 2010 / 2011



Martina



m = petalo, parte superiore

a = petalo, centro

R = petalo, lato destro

t = petalo, lato sinistro

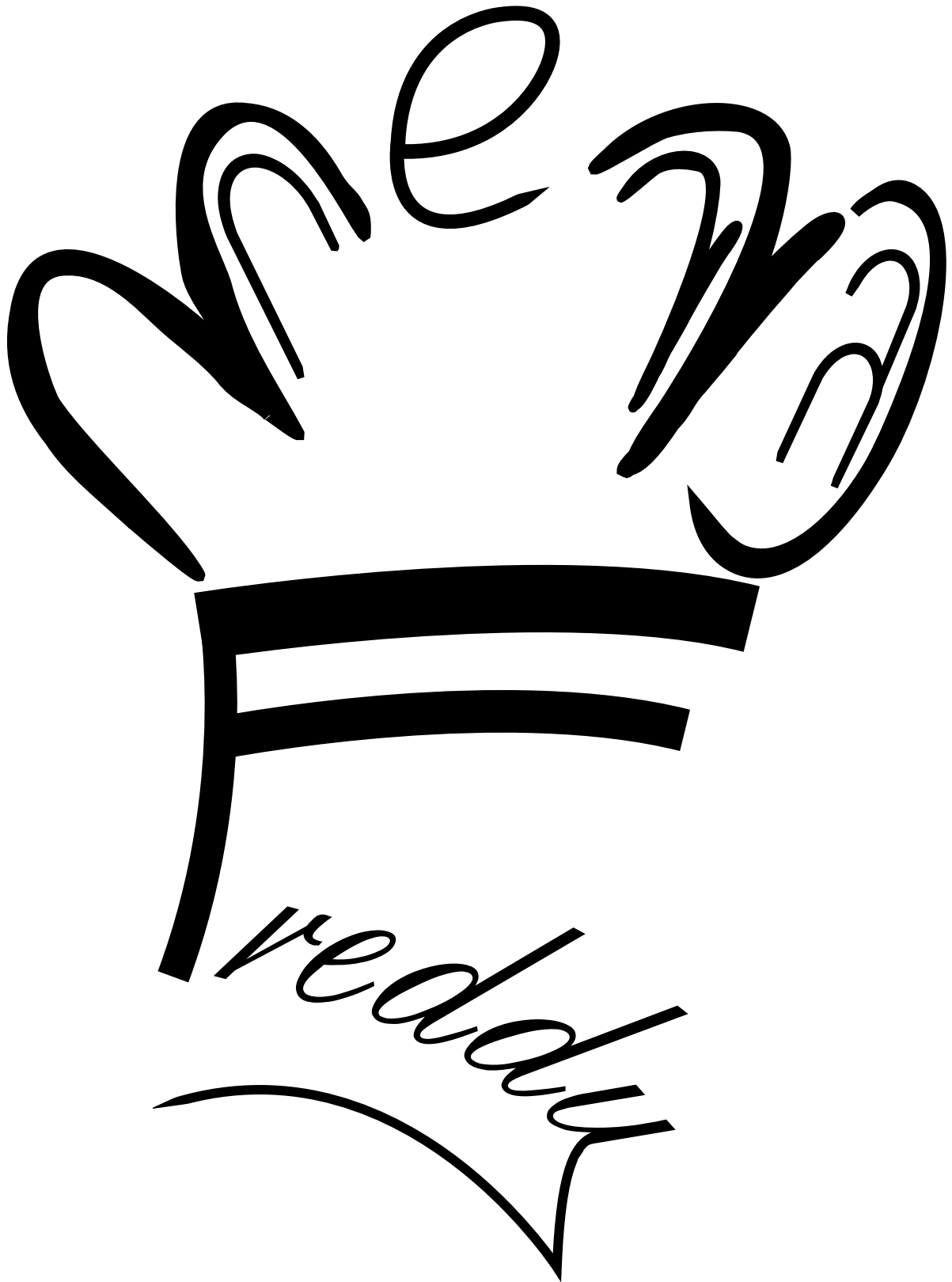
i = stelo, foglia

n = petalo, parte inferiore

a = petalo, centro

Concorso Calligrafico 2010 / 2011

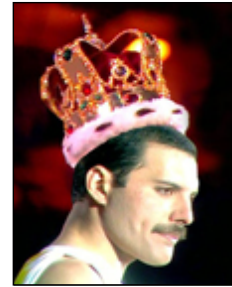
Freddy Mercury



Freddie Mercury

A highly stylized, black calligraphic signature of the name 'Freddie Mercury'. The letters are thick and fluid, with many loops and flourishes. The 'F' is particularly large and bold, with a thick horizontal bar. The 'M' and 'R' are also very large and feature intricate, swirling patterns. The 'e' and 'y' are smaller but still maintain the signature's characteristic fluidity and decorative elements.

Concorso Calligrafico 2010 / 2011



Freddy Mercury



F = base corona, firma

r = firma

e = firma

d = firma

d = firma

y = firma

m = corona, lato sinistro

e = corona

r = corona, lato destro

C = corona, lato destro

U = corona, lato sinistro

r = corona, lato destro

y = corona, lato destro